



# Welcome to Excalibur Terminal!



## **Introduction:**

**CONGRATULATIONS!!** You're using the first full true **GUI** online BBS software introduced for MS-Windows! But WHAT does that mean? *It means you can upload, download, read messages, chat, and move around a BBS all at the same time.* A full real time, multitasking system in the most user-friendly platform, MircoSoft Windows. Not only can you multi-task, this software allows you to preview GIF and BMP graphics files online and view them as they are downloaded. You now have great thumbnails at speeds 100 times faster than conventional DOS ones.(ie. @ 2400 baud, a file that took 104 seconds with RoboFX takes Excalibur software 4 seconds.)

This new technology promises to be the next BBS wave of the future, surpassing any ansi or ripterm graphical system out, on the best user-friendly graphical platform, **MS-Windows !!**

## **Contents:**

Getting Excalibur Ready  
[Personal Information](#)  
[Modem Configurations](#)  
[Directories Configuration](#)

Getting Started  
[Making Your First Call...](#)  
[Window Sizing](#)  
[Types of Log Offs](#)  
[Sound\(Waves\)](#)  
[Messages & EMail](#)  
[Files](#)  
[Graphics](#)  
[Games](#)

Western Canada Excalibur Systems  
[Background Information](#)  
[COMTech Research LABS](#)  
[Phoenix Express BBS](#)  
[Stock Exchange BBS](#)  
[Alternative](#)

Copyrights  
[Copyrights and Credits](#)

Copyrights (c) 1994 COMTech Research LABS

## Personal Information Dialog Box

When you run Excalibur for the first time, fill in your personal information. You only need to do this once. This information will automatically be transferred to the host system when you call one as a new user.

This is the Personal Information Dialog Box :

First*	BRIAN	Birth Date*	08/13/50
Last*	BALONEY	Handle	Taxman
Address*	Parliament Hill		
City*	Chilliwack	ST*	BC
Zip*	V2P 6V1		
* Required			
Phone Numbers			
Home		BBS	(604)792-1392
Work	(604)792-1392	FAX	(604)792-1392

Some of the information is asterisked(\*). This information is mandatory, as it helps us to know who you are. The information boxes that are not marked, are optional.

**Handle** is an option on some BBS, but not others. It allows you to use an alias, or a different name that you choose. It can be almost anything. If you don't have one, here is a suggestion. Pick something of your interests or likes, or a word you like, that might reflect your personality. That usually is a good start. It can be ANYTHING you want, as long as no one else is using it. Examples are Falcon, Speedy, Rommy, Princess, Mighty Moose .... anything you can think of. Get the picture?;

Enter all your information truthfully, because it helps the SysOp know you and the target audience. This can benefit you later , as the SysOp can help you by voice telephone or send information by Snail Mail. SysOps don't like to call and ask for Moosey Goosey, or worse yet get a wrong number. They aren't going to use your information against you anyways, so fill it in.

Some boards have ADULT areas, YOUTH areas, and the likes. So answer your birthdate correctly so the proper flags can be given to you. If you are interested in these area types, and they aren't posted, ask around. Your friendly SysOp will be glad to help.

## Modem Configurations

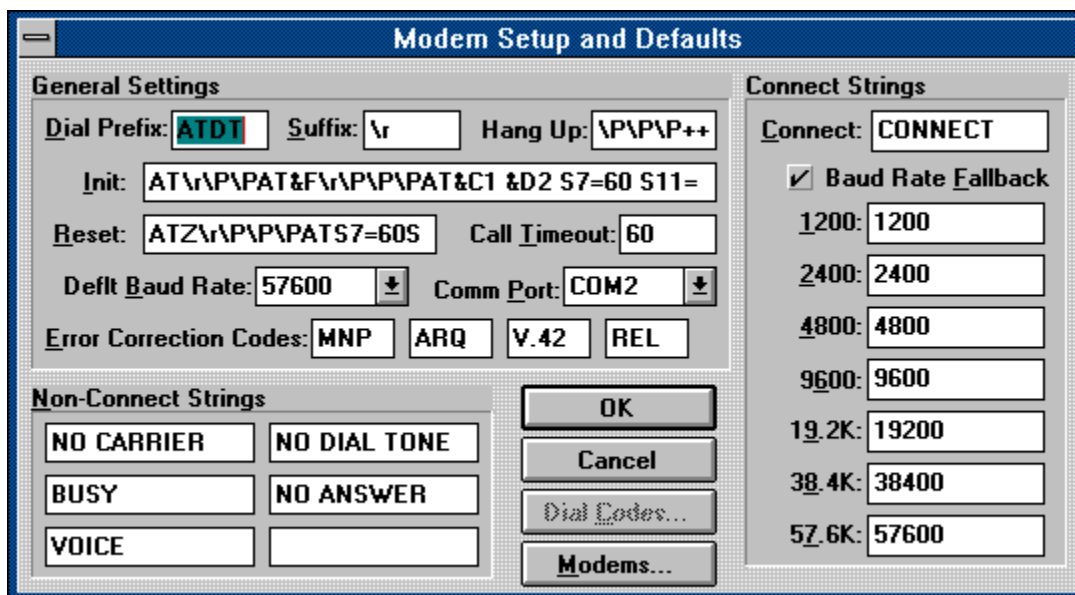
Before you set up Excalibur terminal, if you haven't done so, you should do the following:

- 1) Install your Modem. Simple as it sounds, there are a few individuals that forget this step. :-) See your Users Guide for more details.
- 2) Set up your COMM port(s) in Windows Control Panel.
- 3) Install Excalibur (You're reading this..so it is assumed you have done this)

Now that you have your modem setup to work through Windows, you must do it through Excalibur. From the **Files|Settings...|Modem...** select your modem from the list. (See below.) If your modem is not in the list, but is modern and Hayes compatible, the Default Modem setting at the top of the list will most likely work.

If you click on the button that reads "Modems...", you will be given a list of over 300 different modems, which you can sift through and find specific settings for your modem. When your modem is selected, the best configuration for your modem will fill in the proper information to the dialog box.

This is the Modem Configuration box:



### A Little Insight of this Dialog Box

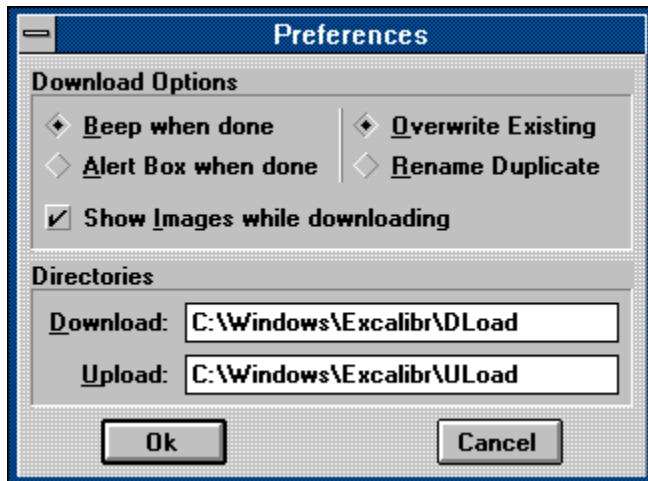
This dialog box has a strong foundation to incorporate most modems. The list in itself is one of the most comprehensive, if not largest out of any communication software out at this date.

A special feature for Excalibur is its ability to compress graphical data to make your modem seem like it is receiving graphics at 9600 when at only 2400. Although most Excalibur systems are connected by high speed modems, 2400 baud modems are not uncommon in the cyberspace.

## Directories Configurations

When you get online, you will eventually find the massive loads of data files that are available. You have to get them somehow. That is where the download function comes in.

We will now talk about how to set the paths to do this **download** function. Here is the dialog box, found in the **Files |Settings.. |Preferences...**



Now the first area with the radio buttons allows you to choose a "Beep" or an alert box when a file transfer is finished. The beep is just a sound, and the alert box is a dialog box that pops up when complete.

The second radio button group deals with the naming of files. If you d/l a file with the same name, you can choose to overwrite the existing one, or rename the file to something different.

The checkbox allows you to view graphics as they are downloaded, if it is checked. If it is not, you can still view it with the preview command, but not as a full screen when downloading.

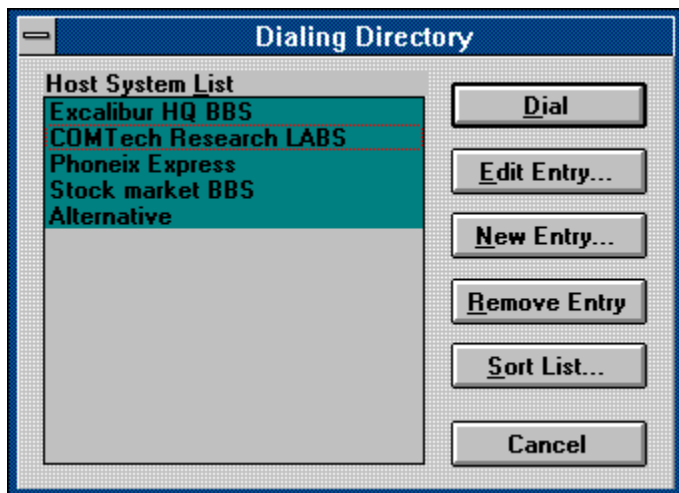
The last two edit boxes define the path to your directories. The Download one is where the files will go when you receive a file, and the upload directory is where you may store files to send. For uploads, when about to upload, you can change the directory with a files dialog box. (More about this in Files)

### **NOTE**

As can be seen in the above dialog box, there are two sub directories, called *dload* and *upload* respectively. These directories have to be made by you, and can be named anything you want. We just used those as examples.

## Making Your First Call

You are all set to make your first call to the BEST BBS Systems in Western Canada, and the world. **But how?!!** Well, you have already done the hardest part, so now all you do is open the Dialing Directory, found in the System pull down menu. The Dialing Directory Dialog Box looks something like this:



This varies with each system, as different people have different numbers to call. You can edit/change/delete these entries as you see fit. Editing each System includes a password, the phone number(s) and BBS name. You may enter 2 phone numbers and Excalibur will dial the secondary number if the primary(first) is busy. Edit each BBS entry with a different password. Write down your passwords in a safe secure place... if you delete or lose the data file you will not be able to reinstall the program and logon to your BBSs if you lost your passwords!

But if you DO have a problem getting on because of this, log on as a different person and leave E-Mail to your SysOp. He will fix the problem for you.

## Window Sizing

One of the small drawbacks of this version, is that the window sizing is a little weird if you are not aware. It will be fixed in the future, but we have a temporary solution until then.

The first way is the *Click and Drag* method. When you see the main window re-size to about 1/4 the screen, you click and hold the bottom right corner while dragging it to 99% of the full window. Now you can see the graphics and 99% of the true value of the window.

The second way is to *Tile* the window. On the menu at the top, click **Window|Tile**, which will tile the window to the MAX size of the window, without actually maximizing the window. If you do this right after the first screen, you don't have to worry about it later. But its up to you on what method you prefer. **Experiment!** Don't be afraid to try different ideas.

Another thing that should be noted, is that you can at real time have multiple windows open, or placed as Child Icons within windows. If you have more than one window open, and you want to see them all, click tile... they will all be replaced in the window so you can see each tile the same size.

Another method is to minimize each window, and you can chose each icon by double clicking it as you see fit. As Child iconic windows, each icon represents one window graphically. Some iconic examples are:



## Types of Log Offs

There are two forms that are generally used for log offs. The first is the normal log off procedure. Somewhere on the BBS you are calling, there is a button or words to the effect of "Leave System" or "Log Off System". Once you place your mouse cursor over it, and click it, you are confronted with a Message Box that asks if you want to leave or not. Click Ok..and you are disconnected as soon as the modem hangs up.

The other way, a lot faster and more aggressive, is to click the systems box in the top left corner **of the BBS screen**. This is commonly called the *Application Control Menu*. You will automatically be disconnected.

Note though, if you click the top most left box, you will close the entire system, and you will have to restart Excalibur Terminal to call another system.

There are other ways to log off. Below are some other common ways:

- 1) Click the Applications Control Menu and choose **Close** or **ALT+F4**.
- 2) Click **System** from the Excalibur menu, and then click **Hang up**.

## **Sounds(.WAV)**

Many Excalibur systems have put together their own Windows` ".WAV" sounds that will play on your soundcard while you are online. You first download the .WAV files using the designated D/L button on the host system. You then simply place and unzip these WAV sounds in your Windows directory, usually defined as C:\WINDOWS or C:\WIN, and the software will do the rest.

If you do not have a sound board in your PC then you can install a PC speaker driver from Microsoft. A common file used is SPEAKER.EXE which you can find from most BBS systems. Follow the instructions in installing this driver, and you to can listen to sounds online!



## Messages/E-Mail

Messages and Electronic Mail. Staying in contact with the world, E-Mail is one of the best sources, AND a vital part of ALL BBS's. Once you find the message area, its quite simple.

### Writing E-Mail

The first is to write your first message. There are two ways, by typing out the message, or using Clipboard with a pre-typed message. The first way is quite simple. When you find the message areas, a dialog box pops up. To write mail, use the **Write** iconic button, which looks like this:



Now just type your message. Alternatively, you can use the Clipboard. To deliver a message from Clipboard to the Message editor, first put your message in Clipboard(Type it in Note Pad while offline, then highlight the text and use the copy command). Then when online, go to the Message area, click the Write Iconic Button, place your cursor at the beginning of the message area and press **<Shift-Insert>** simultaneously. This will instantly transfer your message onto the BBS! This saves precious time On-Line, if you have long messages to leave, or read.

### Reading Messages

Reading messages isn't that hard at all. Just click the **Read** iconic button, that looks something like this:



You can follow replies of messages with the follow **Reply** iconic button that looks like this:



You can also use Windows' Clipboard to capture messages online. Just highlight the text you wish to copy and press **<Control-Insert>** simultaneously. The text will be transferred into your Clipboard.

There is one problem though. You can only save ONE file to the Clipboard. One solution to this is to find a Multiple Clipboard reader found on some BBSs. This will allow multiple messages to be used.

You can also save the clipboard each time, by minimizing Excalibur, and bringing up ClipBoard. Click PASTE, and then save the file. Now you can copy something else to the clipboard. A little tedious, but it works.

### Sending the Message

Now you know how to read and write messages. But how do you save them?;? There are two ways, one being to *post* the message, the other sending *private* mail.

### Sending(Posting) a Public Message

To post a message, you just click the **Post** iconic button.  
The post button looks like this:



Now that you posted a message, you might want to look at it. To do that, click the **Refresh** iconic button, which is the checkmark like this:



### **Sending E-Mail to a Private Box**

Sending Private E-Mail isn't much harder. Yep, you guessed it ... click the **Send** iconic button which looks something like this:



Now you know how to save a message to the BBS. Sometimes, when you receive mail, you will want to save the message. The Host BBS will usually keep your mail around 60 days. If you don't want to keep the mail though, you can delete the message, which helps the SysOp and you, both have a clutter free Mail area. The **Delete** button looks similar to this:



### **Forgot Everything Already?**

Now, at anytime you feel you have forgotten the buttons, place your cursor on the button and read the bottom left corner. It will tell you what that button does. An excellent feature of Excalibur Terminal!

## Files

Files. Information Exchange. Data for all to use. A great function of BBSs is for files. You can receive information on almost anything, ranging from apples to zebras. Getting them, or **downloading**, is an essential part of all modem communications.

You can also send files, or **upload** them. This is a tool used to help exchange your information and ideas to others. Some systems have a file ratio, and uploading then becomes vital for file exchange.  
(See your local SysOp for more details)

Now how do you accomplish a **download**? Well, first you have to find the file libraries, and then find the specific file or files you want. Then you highlight the file(s) and click the D/L button. It looks something like this:

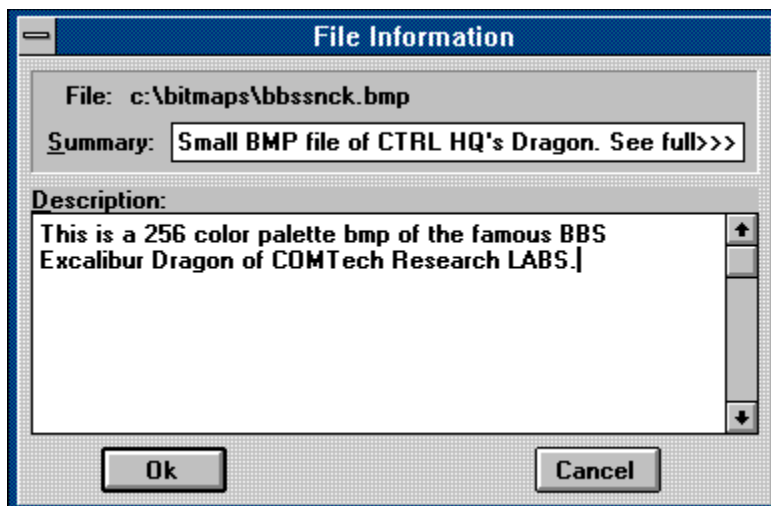


Uploading is just as easy. Find the library that is uploadable to (defined with a small asterick in front of it) and highlight it. Then click the U/L button, that looks something like this:



You are now confronted with a file dialog box, and you sift through your harddrive and find the file that you wish to send to the BBS. Now highlight the file, and click Ok. A dialog box comes up, asking for a description. Don't just say, a file from Moosey Goosey. Explain it. It doesn't have to be to be long, but enough to make sense to all others.

Here is an example:



If you ever get confused, and can't remember by the graphical icons, look down at the lower left corner of the software when you place your cursor on the button. it will display the function. Another neat feature in Excalibur Terminal!

## Files and Compression

Usually, files for transfer are **compressed**, or *archived*. Compression is the utility to

compress (go figure) data smaller than actual size, so a user can receive or send the files faster. Some compression formats are ZIP, ARJ, LZH, ZOO and self extracting EXE files. To use these archivers, read your manuals, or type */help* after the program. ie.*pkunzip /help*. The most often compression utility is PKZIP from PKWare. If you don't have these utilities, ask your SysOp. He'll be glad to help.

## Graphics

A great feature to Excalibur is the ability to see graphics on-line. Through Windows' **GUI** (Graphic User Interface), you can view artistic creations from different SysOps. Each BBS has its own *style*, and its artistic views reflect that. Examples vary from systems that have a cartoon approach, systems having menus and some have charts and graphs.

This system also has great viewing capabilities On-Line. You can **preview GIFS** and **BMP** files while on-line, to determine if you like/need/want the individual file. The previews are in gray-scale, but the actual images can be of any color palette. These *thumbnails* are a great feature of Excalibur, beating all other similar versions. Try it yourself. Call a system like RoboFX, and try to preview an image. Then try it on Excalibur. If you are not amazed at the difference, **WE WILL BE.**

The preview button looks like this:



## **Games**

Games are an asset to BBS communications, but not always used. At present, Excalibur Systems cannot utilize games, but will by the end of 1994. Watch for the new releases, incorporating the Windows GUI, WAV sound files, and SPEED of Excalibur.

## **Background of Western Canada Excalibur Systems**

Excalibur Communications started their project in Tulsa, Oklahoma USA. It didn't take long for Canada to get in on the action. Currently there are over 15 Excalibur BBS systems in Canada, and over 8 are in Western Canada alone.

As Excalibur grows, so does the Western Canada network. Most SysOps from this net meet on Phoenix Express BBS, and International Fido Mail is being incorporated into COMTech Research LABS. As this net grows, so does the strength of Excalibur. It **IS** the BBS wave of the future. It is on the cutting edge of technology, and surpasses any other system to date.

Seeing is believing! Give some of our Systems a call...you won't be disappointed. With Alternative being the first Excalibur board in Canada, Phoenix Express being the Western Canada Excalibur Hub, Stock Market BBS being an investment monitor/exchange system in Vancouver to COMTech Research LABS' Virtual Reality and Windows programming, you are sure to find something to your liking. And ALL in the user friendly platform of Windows!

Included in this help file is a small and brief summary of what each system has to offer. But due to the size, we could not let it get to big. THEREFORE, the information is just the tip of the ICEBERG so to speak. You must get into cyberspace and see for yourself. Hope to see you online soon.

***- From all the Excalibur SysOps of the Western Canada Hub***

## COMTech Research LABS



COMTech Research LABS  
1-(604)792-1392  
Chief SysOp: Dána M. Epp

As you can see from this help file, COMTech Research LABS serves to provide programming on the Windows platform. We are 3rd party Developers for Excalibur Systems, and hope to provide a vast market of software to the Windows BBS community.

Tucked away far from most civilization, COMTech Research LABS has been hidden and obscured from the rest of the world, except from the Excalibur SysOps that have come to know the vast abilities of CTRL, (COMTech Research LABS). We take pride in our work, and which is evident through the BBS interface. Instead of traditional Menu systems, we use a cartoon type approach, where you actually MOVE around the system, going through doors and secret gateways, to find all you seek. With a theme of medieval times, our system proves to be a joy to all callers.

Due to the nature of our LABS, we do a lot of Virtual Reality system programming and development. Therefore, someday users have the SysOp break in to explain for a slowdown for a few minutes. Even with the network of 486 DX computers, we need to take advantage of network rendering for our business. At 14,400 it is barely noticeable, but we still find it a courtesy to explain the fact.

***Hope to see you in cyberspace soon!***

PC'ing you,  
Dána M. Epp



## **Phoenix Express "Windows" BBS**

Phoenix Express "Windows" BBS, North Vancouver, BC, Canada  
(604) 983-6955 & (604) 983-6966. SysOp: David G. Head.

Dedicated to the Windows environment with support files, utilities, games, graphics, sound and more! Since "opening my door" in June 1993, Phoenix Express has grown from an unknown entity to an active centre of Windows-based information exchange. And since switching to the Excalibur Bulletin Board System software in November 1993, a booming increase of 700+ new users in 4 months demanded the addition of a second phone line! Recently, I have added Online Journals & CD-ROM Libraries, with more features constantly under development.

Excalibur has allowed Phoenix Express to continue to provide a wealth of Windows information & files in an ADVANCED bulletin board environment. And with the number of Excalibur BBS's emerging, Phoenix Express "Windows" BBS became the official Western Canada Excalibur SysOp Hub, acting as a local support, information, & file exchange centre for Excalibur SysOps.

Hope to see you online soon! David G. Head. SysOp.

## **Stock Market BBS**

The Stock Market BBS - (604) 668-1929

Technical SysOp: Dennis Pugh

Market SysOp: Scott Randall

The Stock Market BBS is devoted primarily to the graphical display of monetary investment information. We are currently tracking over 700 Canadian Mutual Funds on a daily basis, with plans for the VSE, TSE, NYSE, NASDAQ, and investment news in the future. We are a semi-private BBS, with some areas of sensitive information restricted to our brokerage clients. To enroll for a trial membership, please leave private mail to the Sysop, and ensure that your log-on information contains a number that we may reach you. We are sorry, but due to contractual obligations with our associated brokerage firm, we may not provide investment information to callers from outside Canada.

## Alternative

"THE ALTERNATIVE" was born on the first day of July 1993, in beautiful Rainbow Country, Chilliwack B.C.

It was kept, a private BBS for over a month to work out any bugs which might arise. Excalibur was in it's early days of Beta, so features were changing fast. "THE ALTERNATIVE" was the first Excalibur BBS in Canada

and enjoys callers from as far away as Japan. It also features a very unique user interface. I have tried to

stay away from the standard graphical menu setup. "THE ALTERNATIVE" receives 90% of it's files via satellite, and once Fido support is written into Excalibur, the following Echo's and features will be offered via

satellite. Fido, NaNet, Rosenet, Intelec, Internet, Planet Earth, Microsoft, Echo Net and Rime. Also hourly updated weather maps, and USA Today Decisionline daily news will be added.

Sysop, DENNIS BAKER

604-794-3611 2400-28.8 Baud modem,

and as of April 12 94

Second line 604-794-3671 14.4

## Copyrights and Credits

Excalibur is a trademark of Excalibur Communications. MS-Windows is a trademark of Microsoft Corporation. PKUNZIP and its utilities are copyrighted by PKWARE.

This help utility is a product of COMTech Research LABS(tm) on behalf of the Western Canada Systems Hub, and not of Excalibur Communications.

Thus any recommendations put forth have been decided by the SysOps of the Western Canada Excalibur Net, **NOT** of Excalibur Communications.

If you have any problems or concerns, please contact:

**Dána M. Epp**  
*Chief Systems Engineer*  
**COMTech Research LABS**  
BBS: 1-(604)792-1392  
Voice: 1-(604)792-3962



Copyright (c) 1994 COMTech Research LABS

